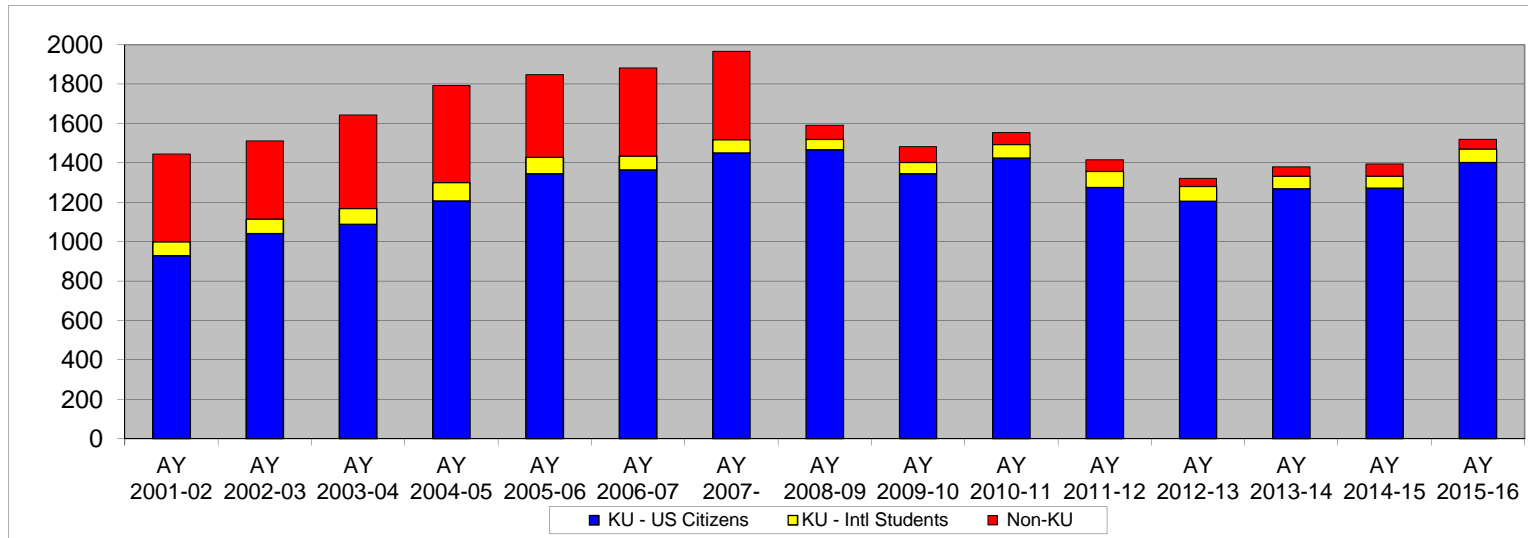


Study Abroad Participation, KU and Non-KU Students*
Office of Study Abroad
April 2017

	KU - US Citizens	KU - Intl Students	Non-KU	Total
AY 2001-02	929	70	445	1,444
AY 2002-03	1,041	73	397	1,511
AY 2003-04	1,088	80	475	1,643
AY 2004-05	1,208	92	493	1,793
AY 2005-06	1,346	83	418	1,847
AY 2006-07	1,365	70	447	1,882
AY 2007-08**	1,451	66	450	1,967
AY 2008-09	1,468	51	72	1,591
AY 2009-10	1,345	57	80	1,482
AY 2010-11	1,425	68	60	1,553
AY 2011-12	1,275	82	58	1,415
AY 2012-13	1,205	75	41	1,321
AY 2013-14	1,269	64	47	1,380
AY 2014-15	1,272	61	61	1,394
AY 2015-16	1,403	67	49	1,519



* Data reflects all KU and non-KU study abroad participants, including the School of Business CIMBA Program-Italy, departmental programs/credit-bearing projects and KU Medical Center programs.

** AY 2007-08 is the last year School of Business sponsored the CIMBA Program, Italy.